



Quarterly health insurance bulletin

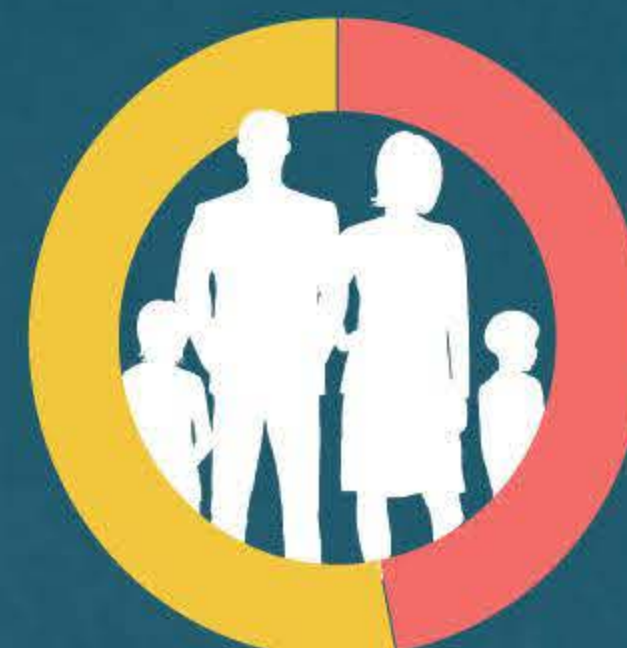
All information as at 30 September 2021



Health Insurance Coverage



Number of people with health insurance

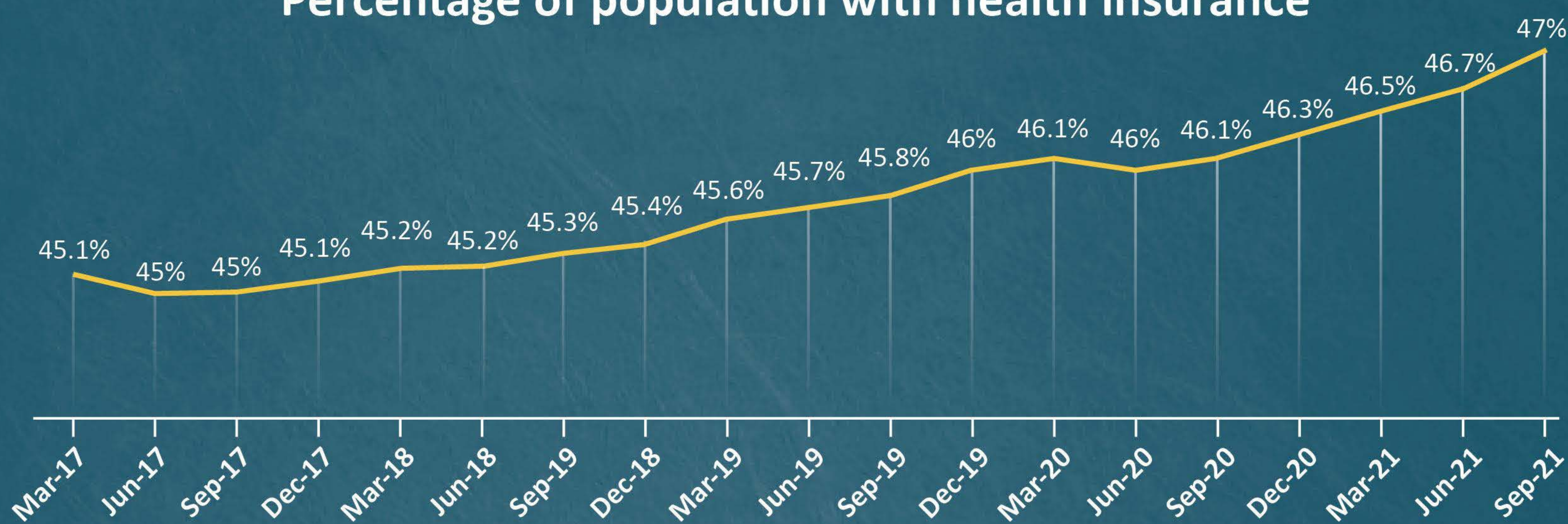


Percentage of total population with private health insurance

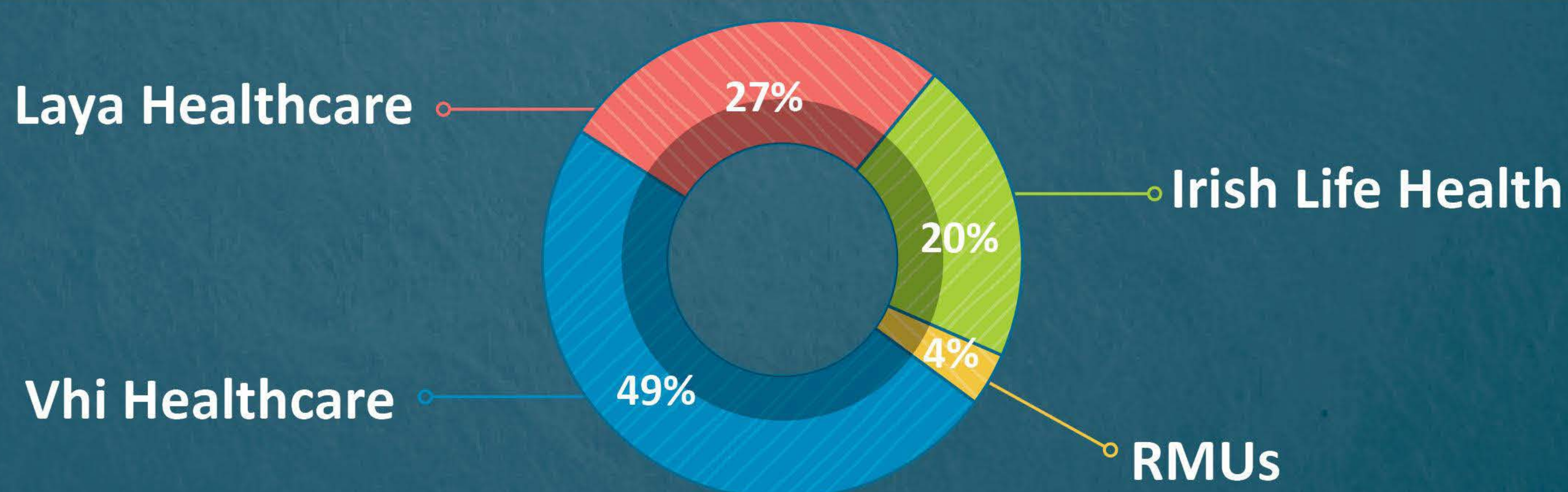


Change in number of people with health insurance over the last quarter

Percentage of population with health insurance



Market Share



Health Insurance Plans

303 inpatient health insurance plans available to consumers

23 cash plans

7 outpatient plans

Most consumers have plans with **substantial cover in private hospitals and semi-private accommodation.**

Around 10% of consumers have plans that offer cover only in public hospitals (these policies are typically cheaper).

5 plans most purchased with Vhi	Adult Price (€)
HealthPlus Access	2,238
HealthPlus Extra	2,740
One + Plan	1,260
One Plan Family	1,283
PublicPlus Care Day-to-Day	535

5 plans most purchased with Laya	Adult Price (€)
Essential Connect Family	1,583
Essential Health 300	1,094
Inspire Plus	1,346
Simply Connect	1,362
Simply Connect Plus	1,471

5 plans most purchased with Irish Life Health	Adult Price (€)
4D Health 1	1,205
4D Health 2	1,394
4D Health 4	1,680
BeneFit	1,037
Nurture Plan ILH	1,168



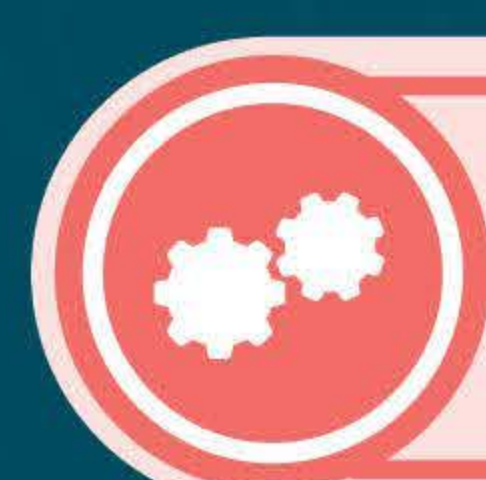
Prices



The Average Adult Premium is **€1,470**



The average price increase so far in 2021 is **4%**



Product Developments



Number of new plans introduced	14
Number of plans retired	15